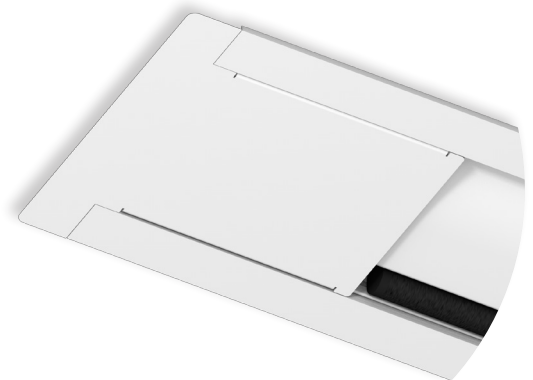




The **MAJOR HOME CINEMA** is an electric screen dedicated to the Home Theatre market but also in A/V Professional in prestigious meeting rooms. It is manufactured, as a standard, with black side borders, a black top drop 30 cm. high (customizable), a black bottom border and a black dowel bar. Thanks to the borders all around, the image will be perceived as sharper to the spectator's eye.

Available in 4:3, 16:9 and 16:10 ratios or **bespoke sizes**.



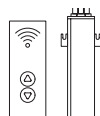
**False ceiling trim kit**  
(optional - for details see p. 53)



n.4  
Wall/Ceiling  
brackets



n.1  
On/off  
switcher



Kit RF Remote  
control with  
external  
receiver



Interface  
switch 12 volt



Low voltage  
contact  
interface



Multiple  
control  
interface set



Interface  
RS485



Nm 9  
Rpm 26  
Faster  
motor

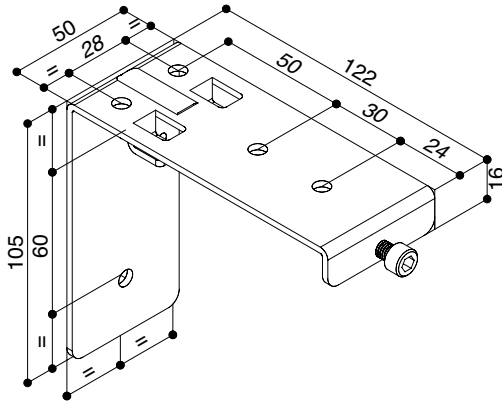
**INCLUDED**

**OPTIONAL** pag 70-71

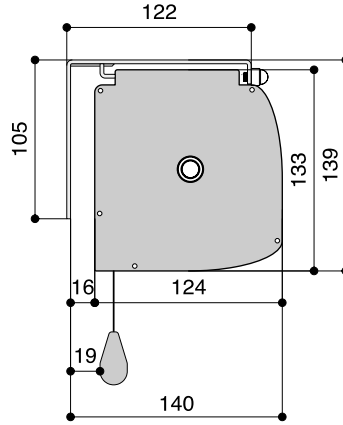
**DROP OF  
PROJECTON  
CLOTH**  
STANDARD

**FRONT DROP OF  
PROJECTON  
CLOTH**  
*(optional)*

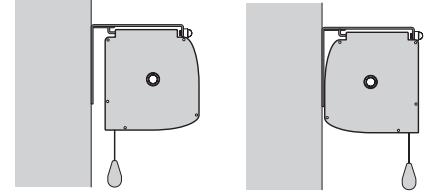
### WALL-CEILING BRACKET



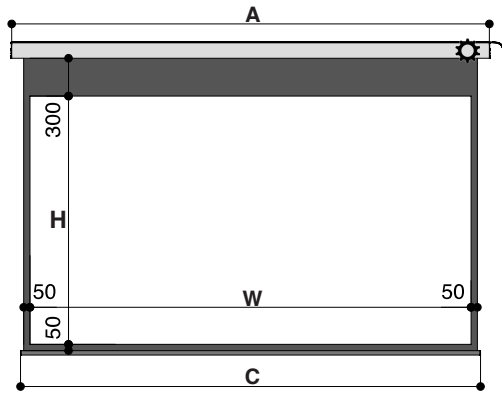
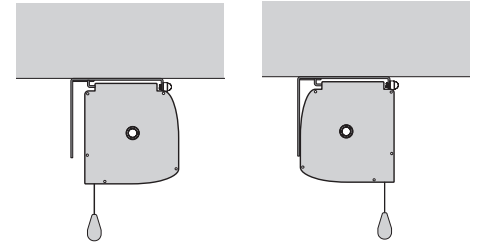
### HOUSING DIMENSIONS



### WALL MOUNTING



### CEILING MOUNTING



### TECHNICAL SPECIFICATIONS

- Silent motor system provides a smooth and quiet operation
  - Power: **10 Nm**
  - Speed: **17 rpm**
  - Power supply: **230V / 50 Hz**
  - Consumption: **156 W**
  - Certification: **IMQ**
- Totally manufactured from aluminium
- Housing dimensions: 124x133 mm. (DxH)
- Housing painted with white epoxy powders (RAL 9010)
- Four universal mounting brackets either for ceiling or for wall included
- On/off switcher included
- Power cable located at the **right** side of the screen housing seen from the front
- Flame-retardant projection surfaces
- Black side borders of 5 cm., black bottom border of 5 cm., black top drop of 30 cm. and black dowel bar: height 35 mm. depth 20 mm.
- **Screen housing available in different colours** *(optional)*

The measures in the drawings are expressed in millimetres.

### DIMENSIONS measures in cm

4:3 Ratio Viewing area (WxH)	16:10 Ratio Viewing area (WxH)	16:9 Ratio Viewing area (WxH)	Overall dimensions A - C	Approx. net weight (Kg)
350 x 265	350 x 219	350 x 197	371 - 364	32
400 x 300	400 x 250	400 x 225	421 - 414	38
-	450 x 281	450 x 253	471 - 464	42

### PROJECTION CLOTHS

Front projection surfaces	Gain		
White	1.2		
Matte White	1.2		
Lumi Grey	0.8		
Microperforated	1.1		
Lumi Grey Microperforated	0.8		
Pure KS	1.1		
Pure Matte KS	1.1		
Bright Contrast 3D 0.8*	0.8		

\*Limited in height

**Warranty:** 5 years on the motor - 24 months on the other components